

PRE-SCOUTING FROM AFAR

KELLY TATE



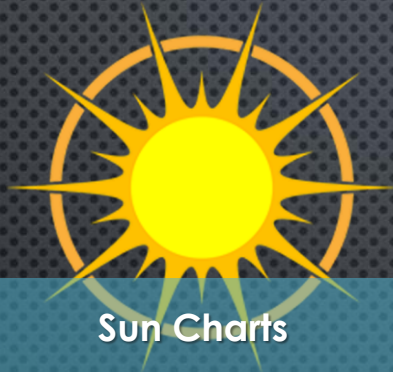
ABOUT ME



VISUALIZING THE SHOT

- POSSIBLE RATIOS
 - PLANNING FOR A PANORAMA
- TIME OF DAY
 - LIGHTING
 - ELEMENTS OF NATURE
 - HUMAN ACTIVITY
- GENERAL FEELING
- FOCUS
- IMPORTANCE OF TEST SHOTS

TOOLS



Sun Charts



Topographic/Hiking Maps



Google Earth

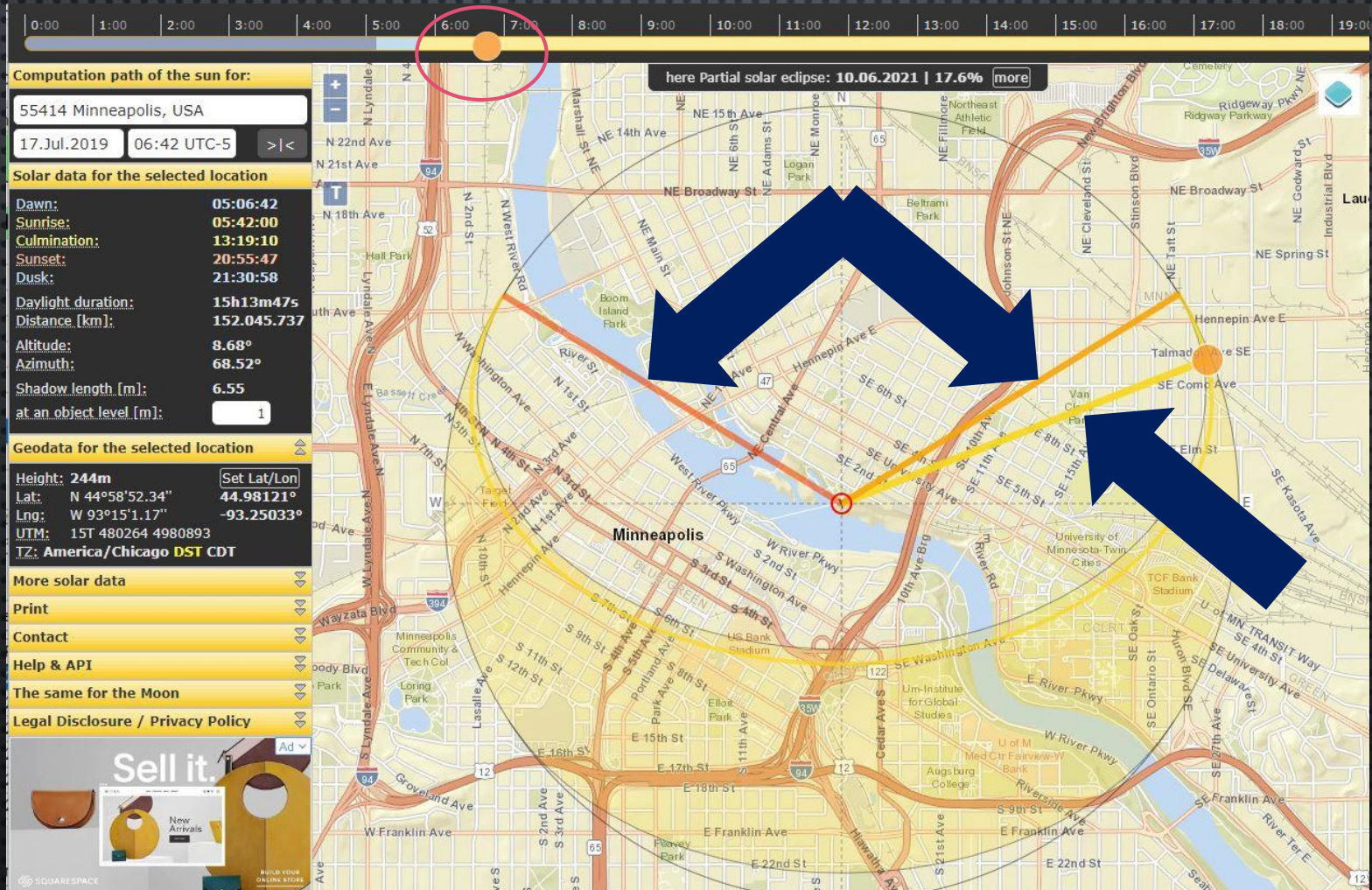


Surf Reports



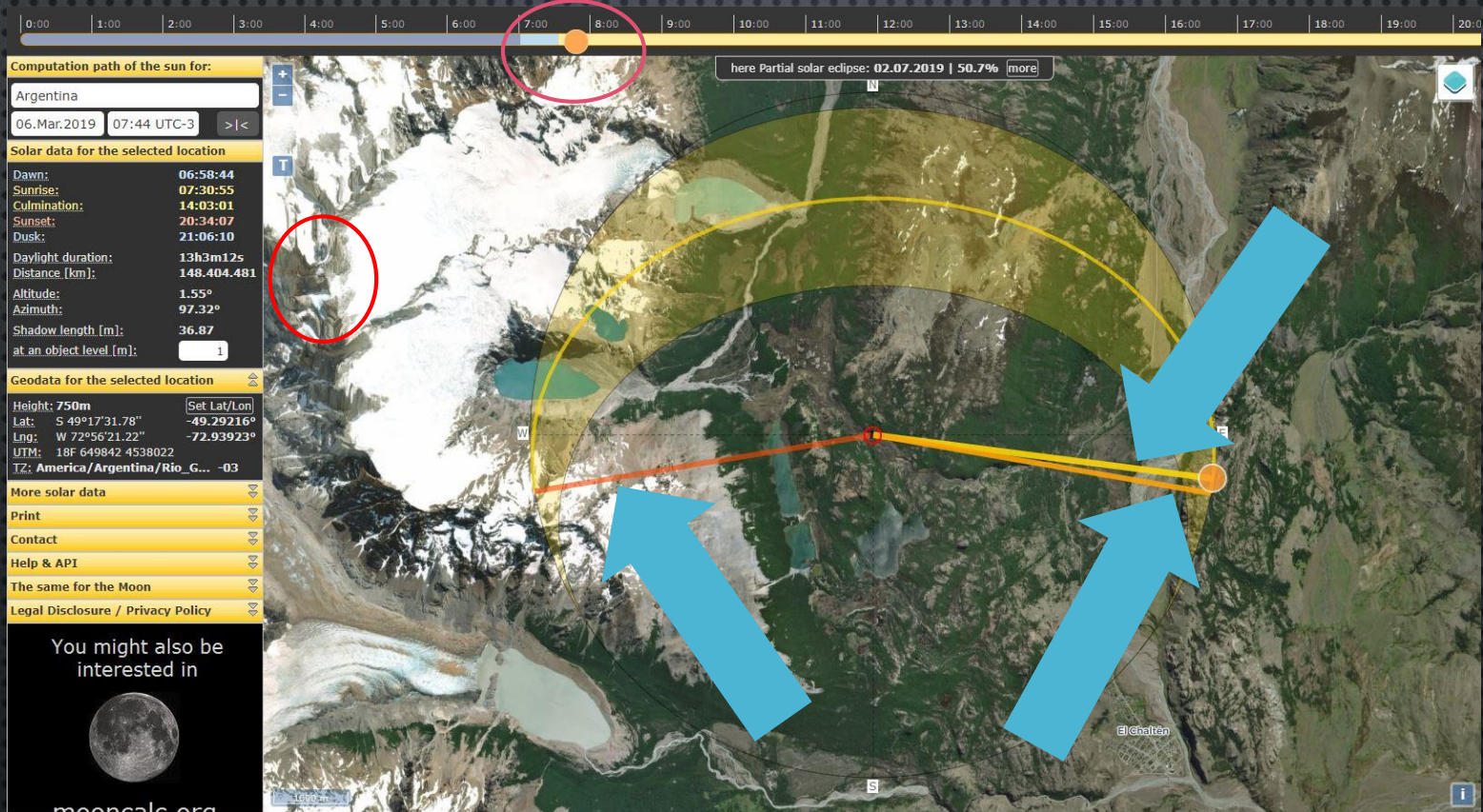
SUN CHARTS—STONE ARCH BRIDGE SUNRISE

www.suncalc.org





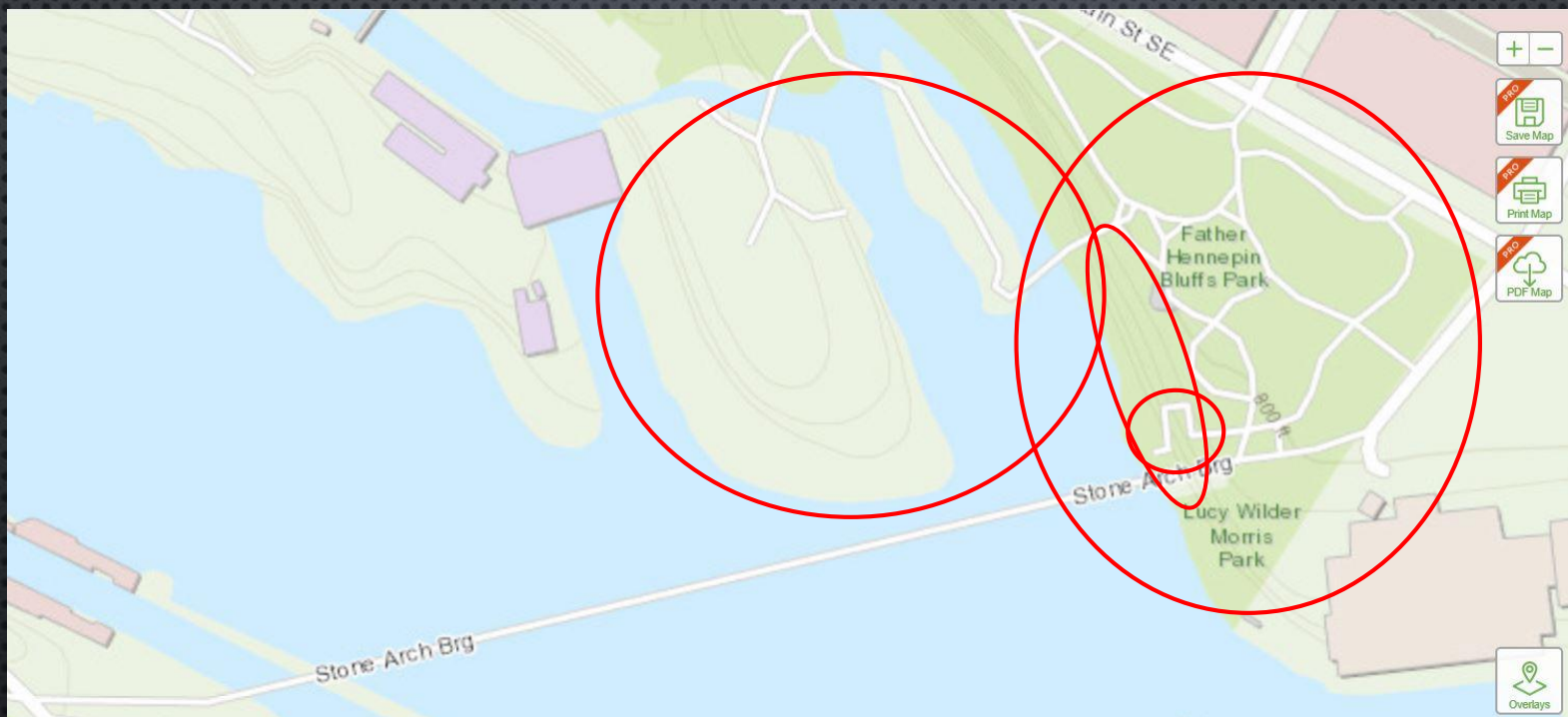
SUN CHARTS—PATAGONIA SUNRISE





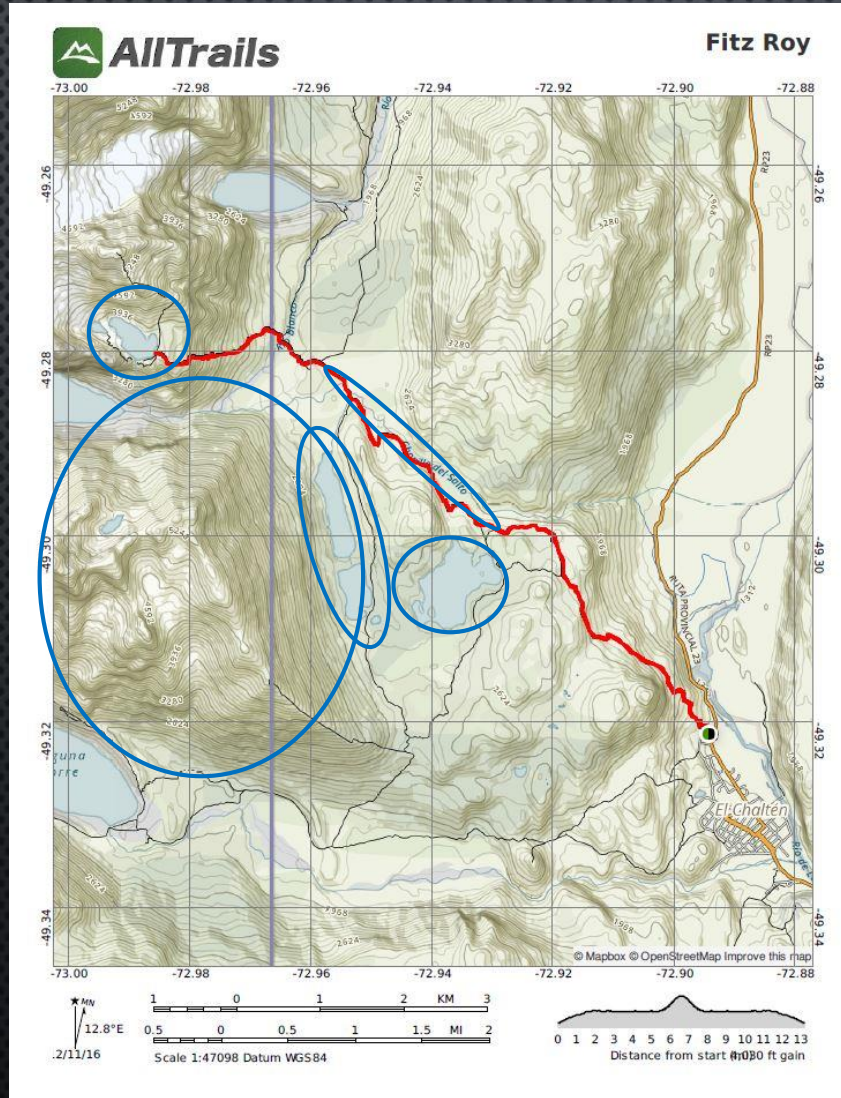
TOPOGRAPHIC/HIKING MAPS—STONE ARCH BRIDGE

www.alltrails.com





TOPOGRAPHIC/HIKING MAPS—PATAGONIA





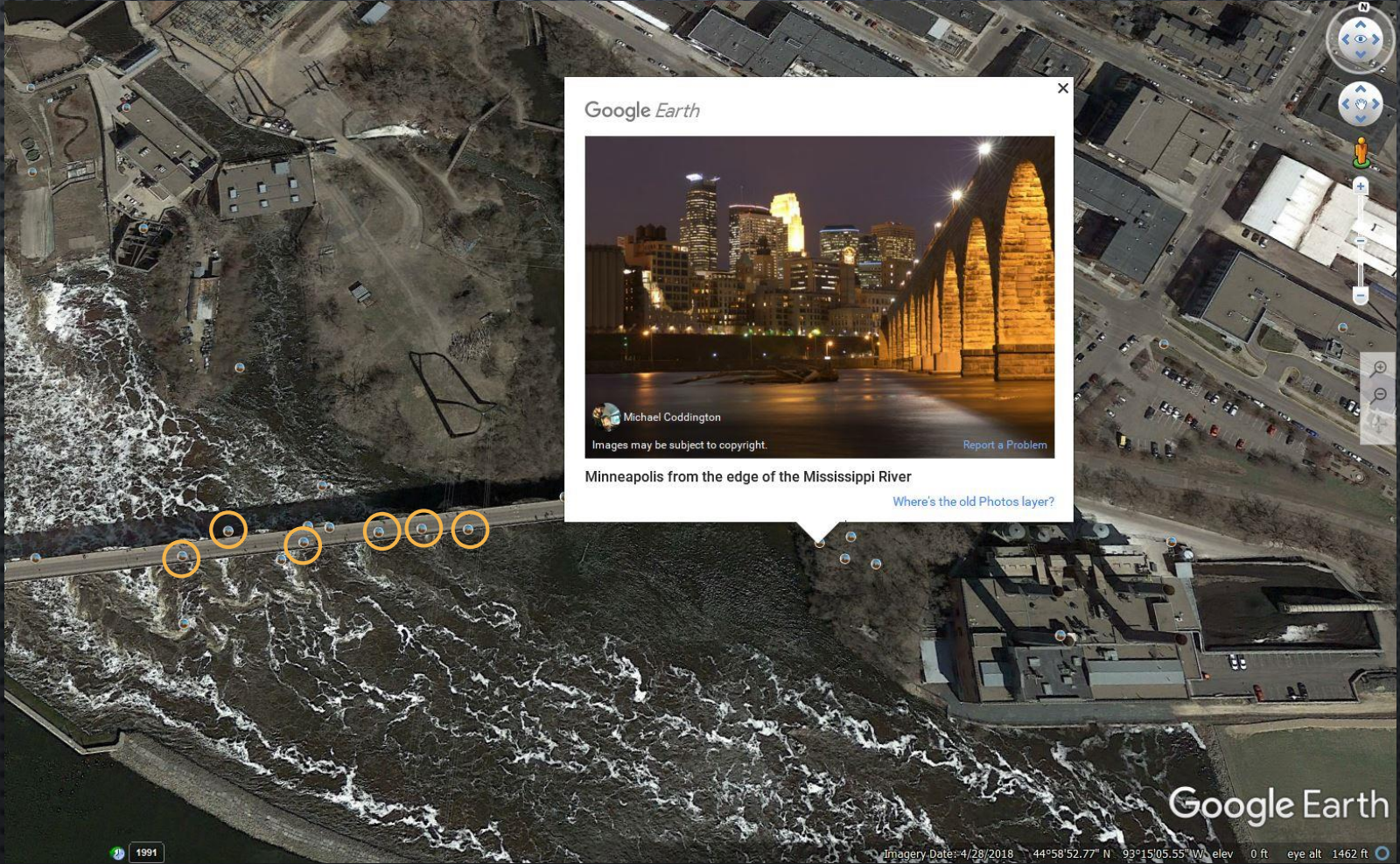
GOOGLE EARTH—STONE ARCH BRIDGE

www.google.com/earth

The image shows an aerial view of the Stone Arch Bridge in St. Louis, Missouri, spanning the Mississippi River. The bridge is a large stone arch structure. The river is turbulent with white water rapids. The surrounding area includes industrial buildings, parking lots, and a road. A photo viewer overlay is visible in the center-right, showing a street-level view of the bridge. The photo viewer includes the text "Google Earth", "Alexander Lamar", "Images may be subject to copyright.", "Report a Problem", "[Untitled]", and "Where's the old Photos layer?". At the bottom of the main image, there is a "Click to see historical imagery from 1991." button and a date selector showing "1991". The bottom right corner of the main image displays the "Google Earth" logo and technical data: "Imagery Date: 4/28/2018 44°58'52.77" N 93°15'05.55" W elev 0 ft eye alt 1462 ft".



GOOGLE EARTH—STONE ARCH BRIDGE





GOOGLE EARTH—PATAGONIA

A satellite view of a mountainous region in Patagonia, Argentina. A red line traces a trail through the landscape, which is marked with several yellow circles. The terrain is rugged, with rocky outcrops and patches of green vegetation. In the bottom left corner, the text "Laguna del Pato" is visible. In the bottom right corner, the text "Google Earth" is visible. The background has a dark, dotted pattern.

Google Earth

nelson gianelli

Images may be subject to copyright. [Report a Problem](#)

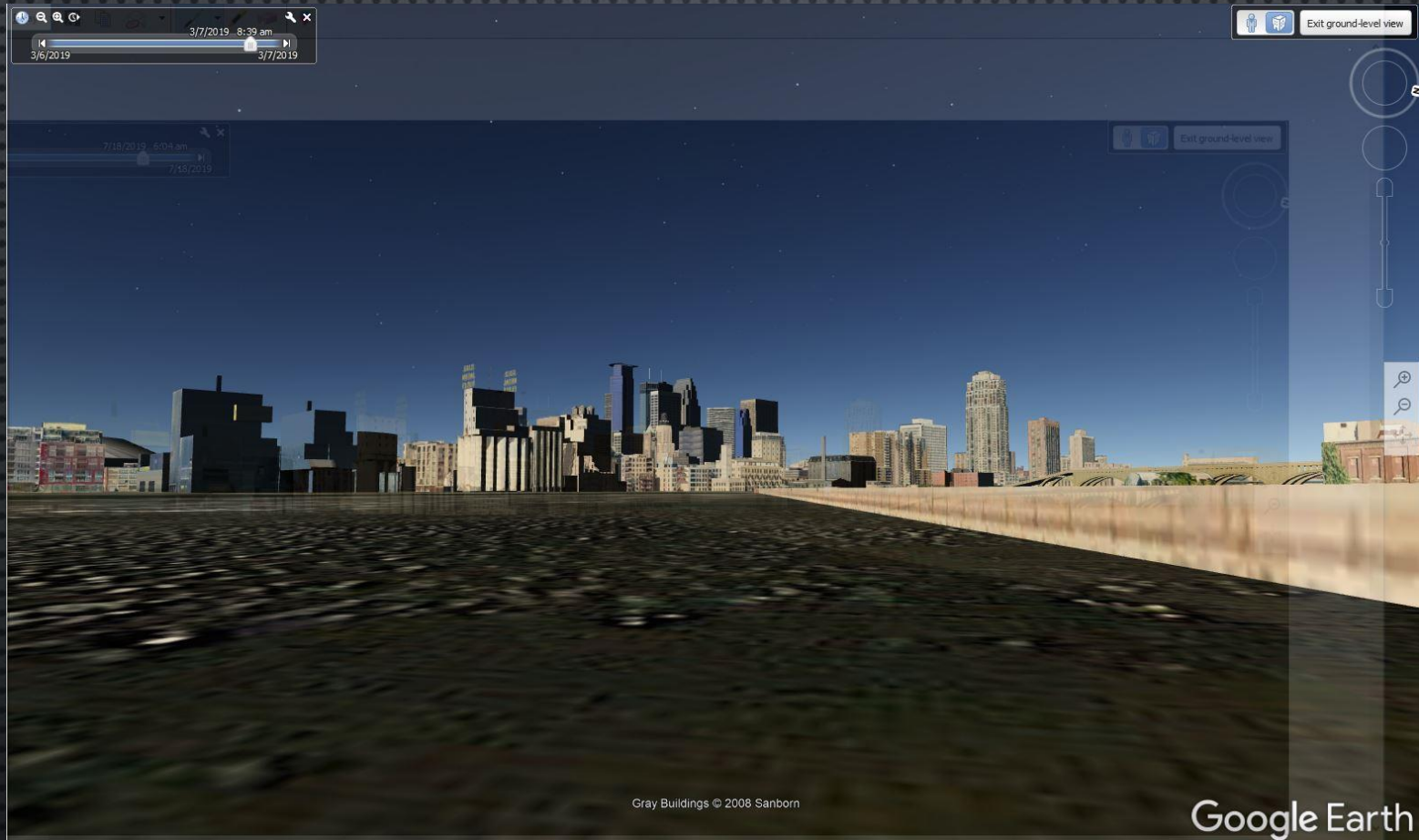
la cascada perdida

[Where's the old Photos layer?](#)

© 2018 Google
Image © 2019 CNES / Airbus



GOOGLE EARTH—MARCH 7TH SUNRISE





GOOGLE EARTH—JULY 17TH SUNRISE

A screenshot of the Google Earth interface. The main view shows a city skyline at sunrise, with buildings silhouetted against a bright blue sky. The foreground is a dark, textured ground surface. The interface includes a timeline at the top left showing the date 7/18/2019 at 6:04 am, and a search bar at the top right. The Google Earth logo is visible in the bottom right corner.

7/18/2019 6:04 am

7/17/2019 7/18/2019

Exit ground-level view

Gray Buildings © 2008 Sanborn

Google Earth

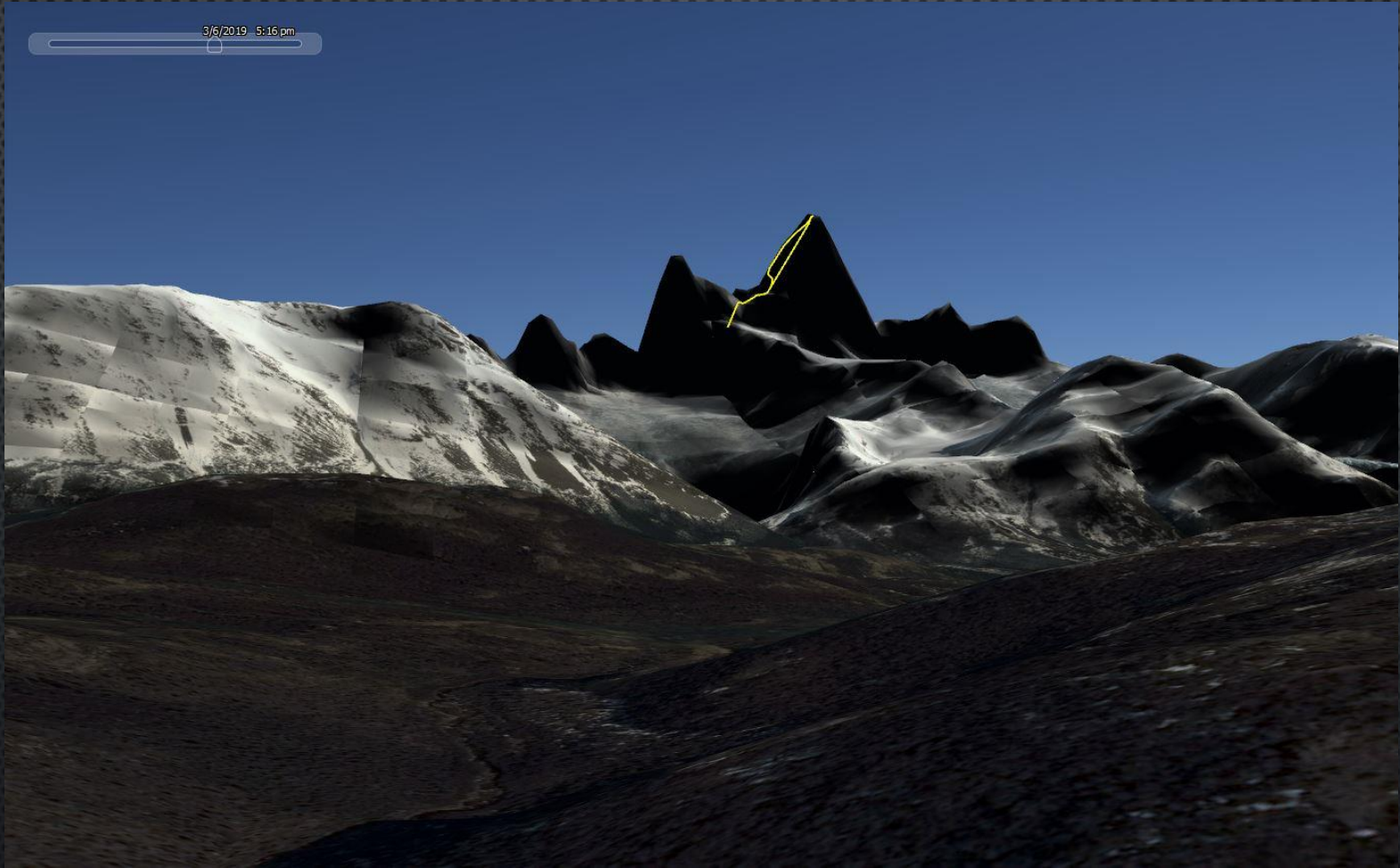


GOOGLE EARTH—MARCH 7TH SUNRISE





GOOGLE EARTH—MARCH 7TH SUNSET



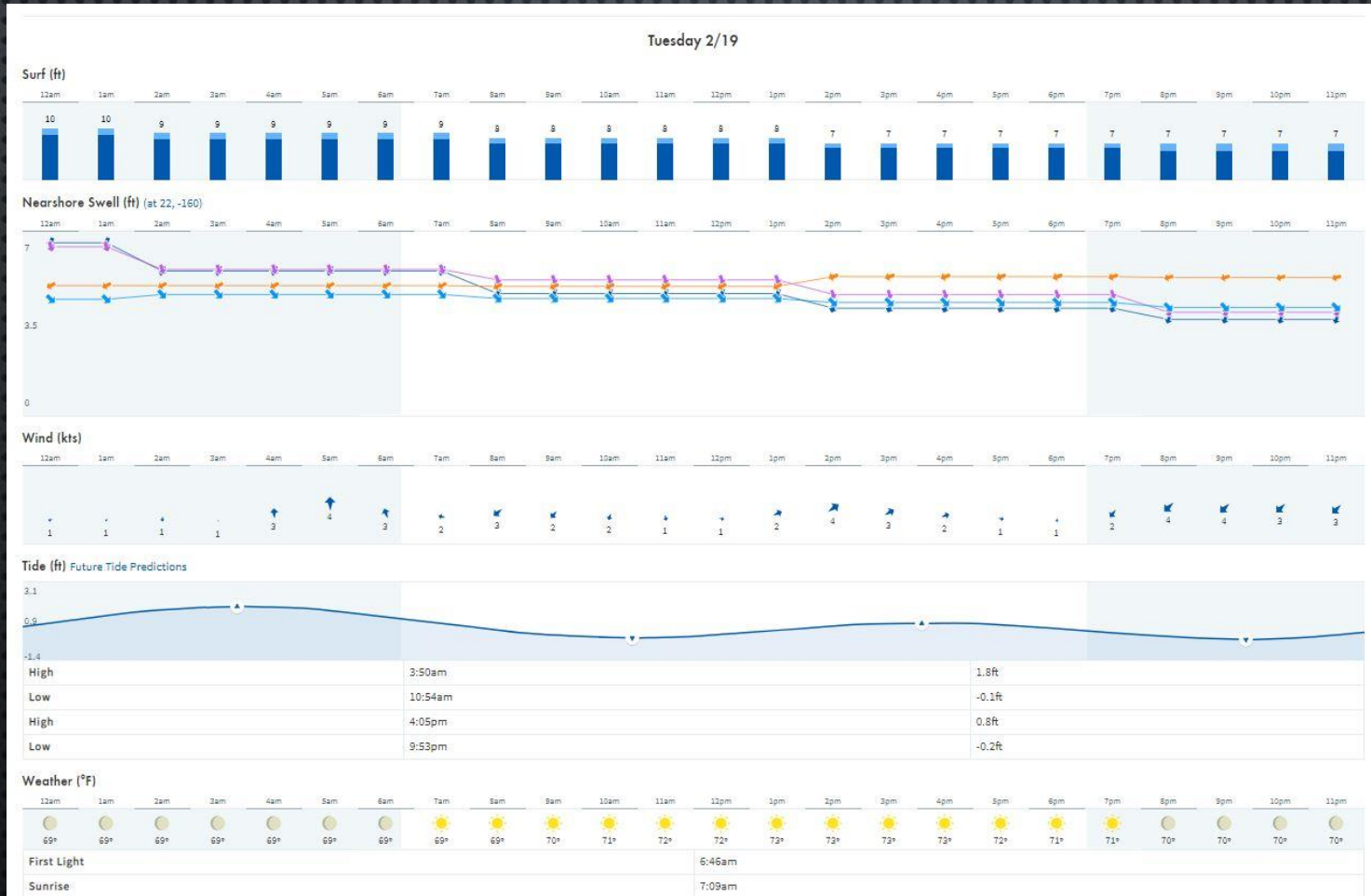
FINAL RESULT--ENCHANTED WATERS





SURF REPORT

Source is highly dependent upon location.
(example is from www.surfline.com)



LOW TIDE—PRE-SCOUT, IRELAND



FINAL RESULT: HIGH TIDE--MIDNIGHT



PLANNING AHEAD: LOGISTICS



PLANNING AHEAD: LOGISTICS—THE ARCHIVE



PLANNING ON-SITE

- WEATHER APPS FOR YOUR LOCATION
- TALKING WITH LOCALS
 - LOCATIONS
 - WEATHER PATTERNS
- PRE-SCOUTING—BOOTS ON THE GROUND
- BACKUP PLAN(S)

DIFFERENT PERSPECTIVES--ICELAND



DIFFERENT PERSPECTIVES: FINAL RESULT--LOST



PLAN B—WHEN NATURE DOESN'T COOPERATE



PLAN C-- WHEN NATURE REALLY DOESN'T COOPERATE



QUESTIONS?

www.KellyTatePhotography.com